

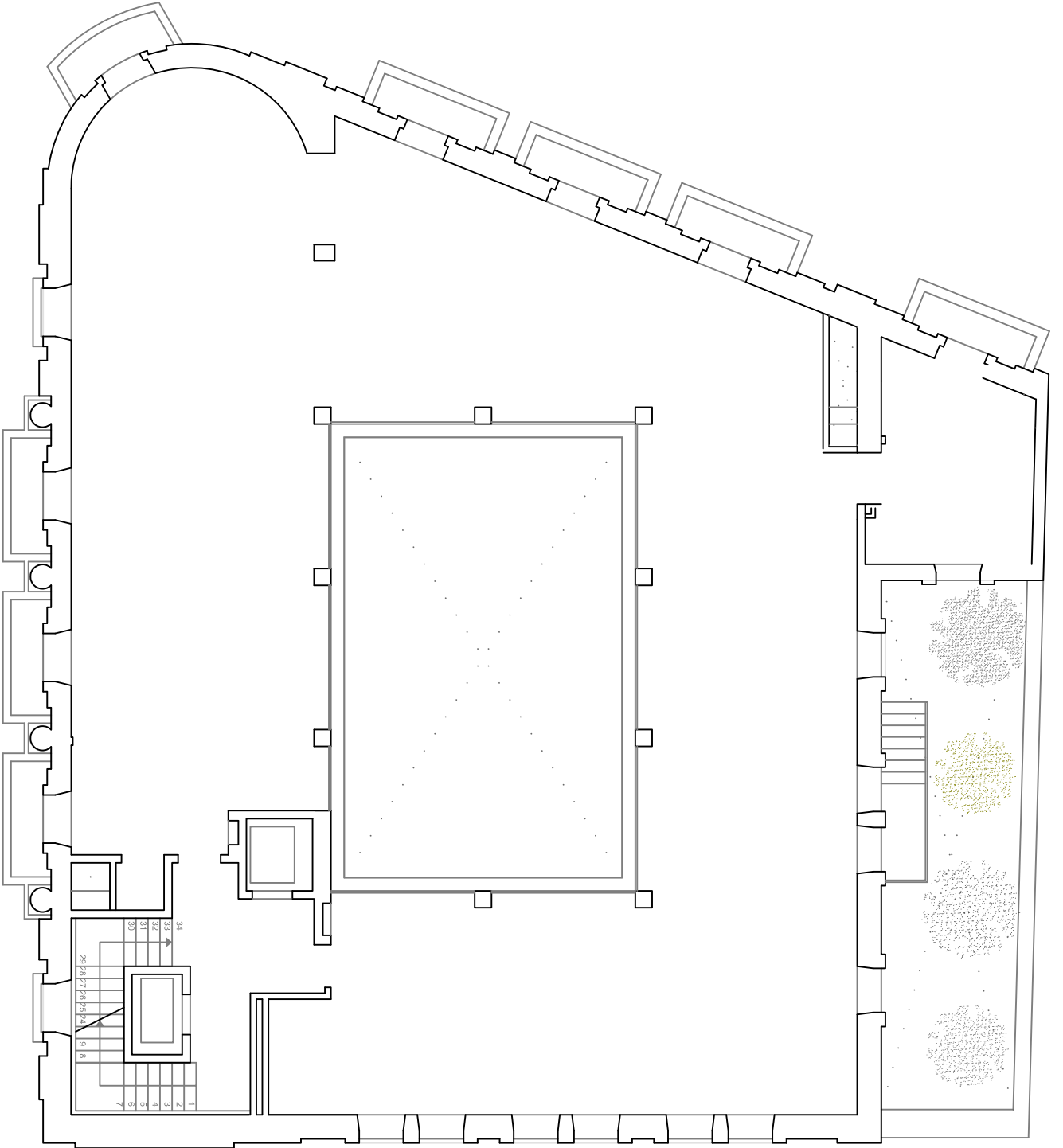
Total sup. construida cerrada P. BAJA

521,33 m²

Total sup. construida abierta (patio)

78,07 m²

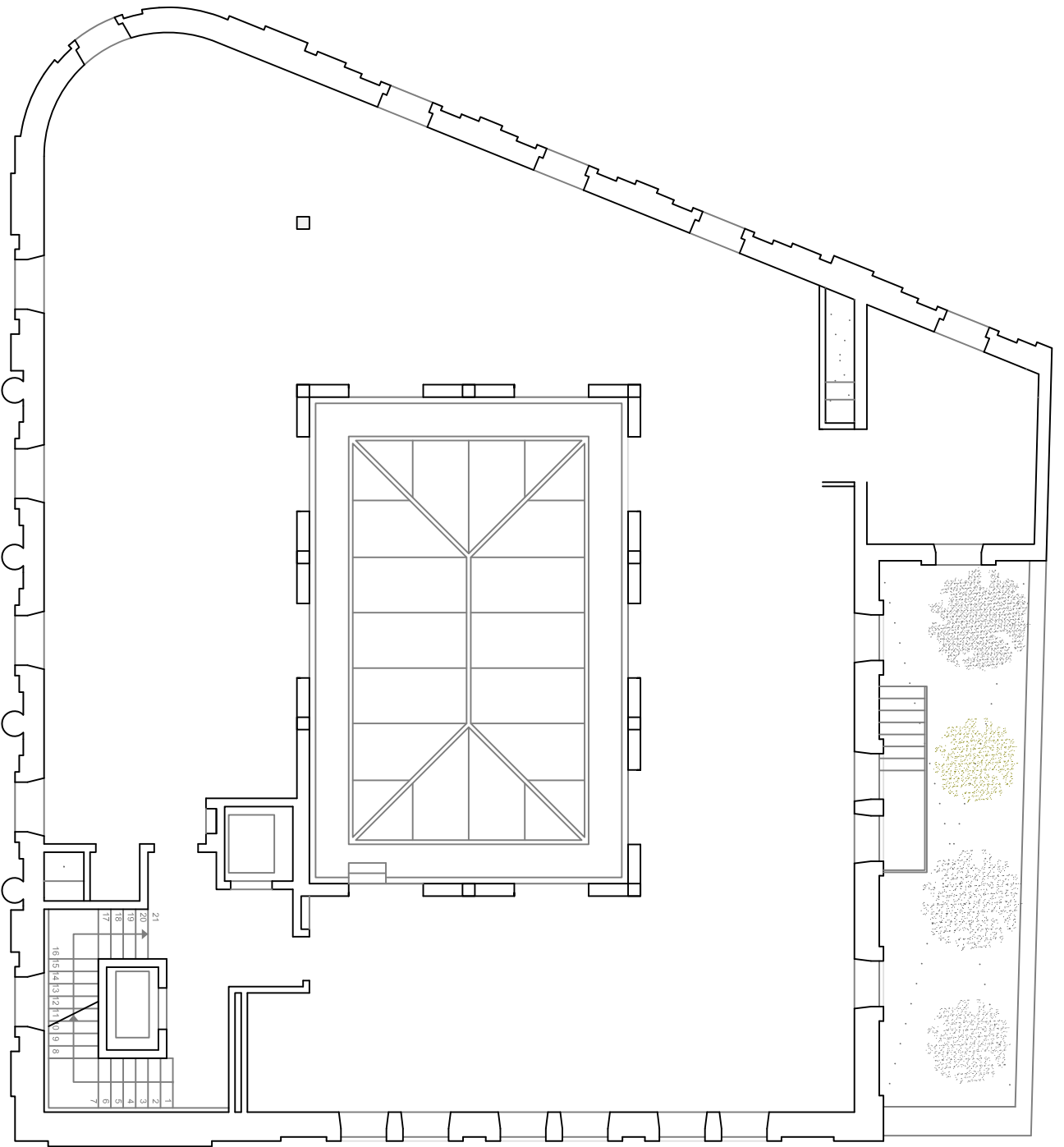


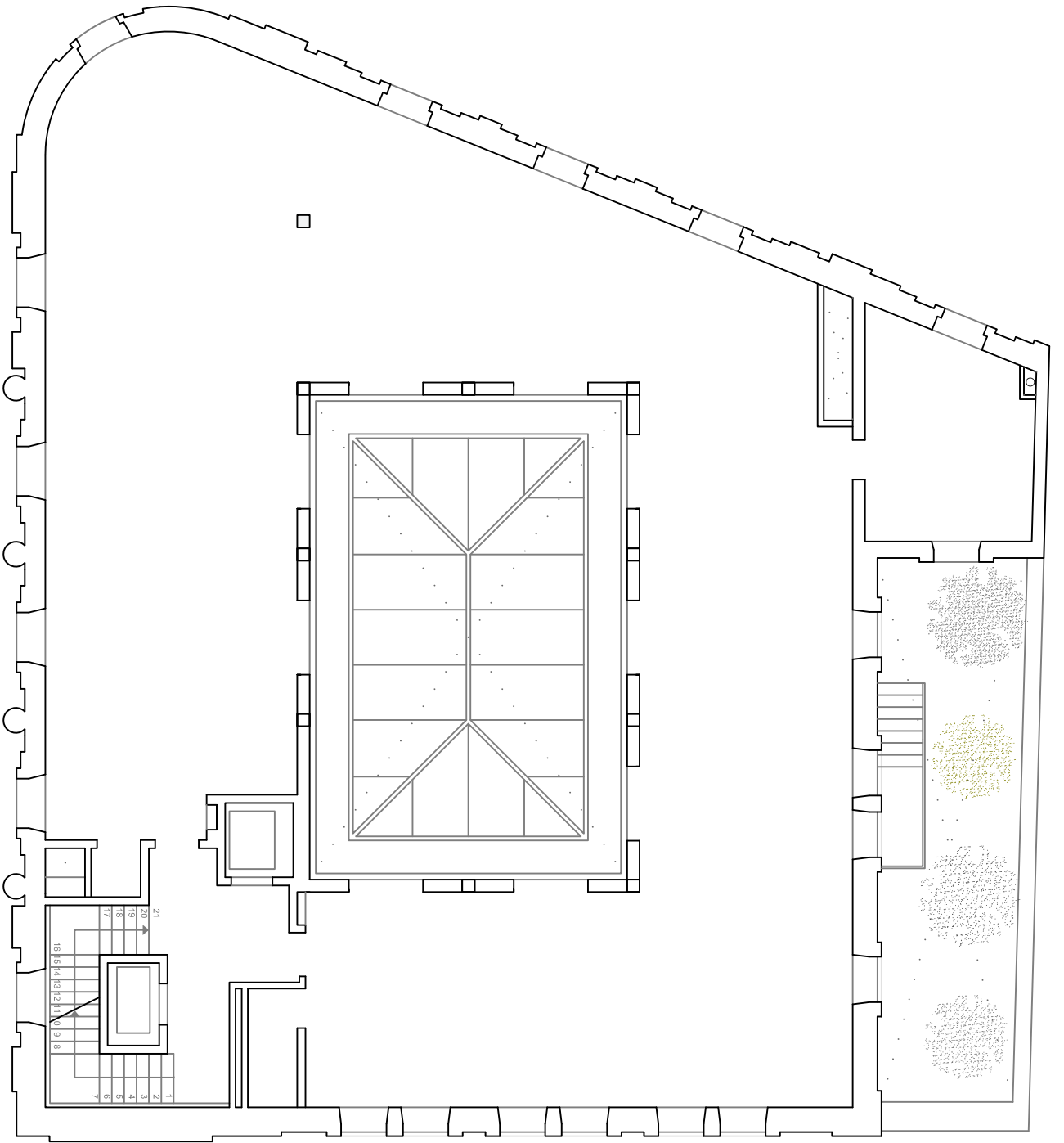


Total sup. construida PLANTA PRIMERA

463,15 m²



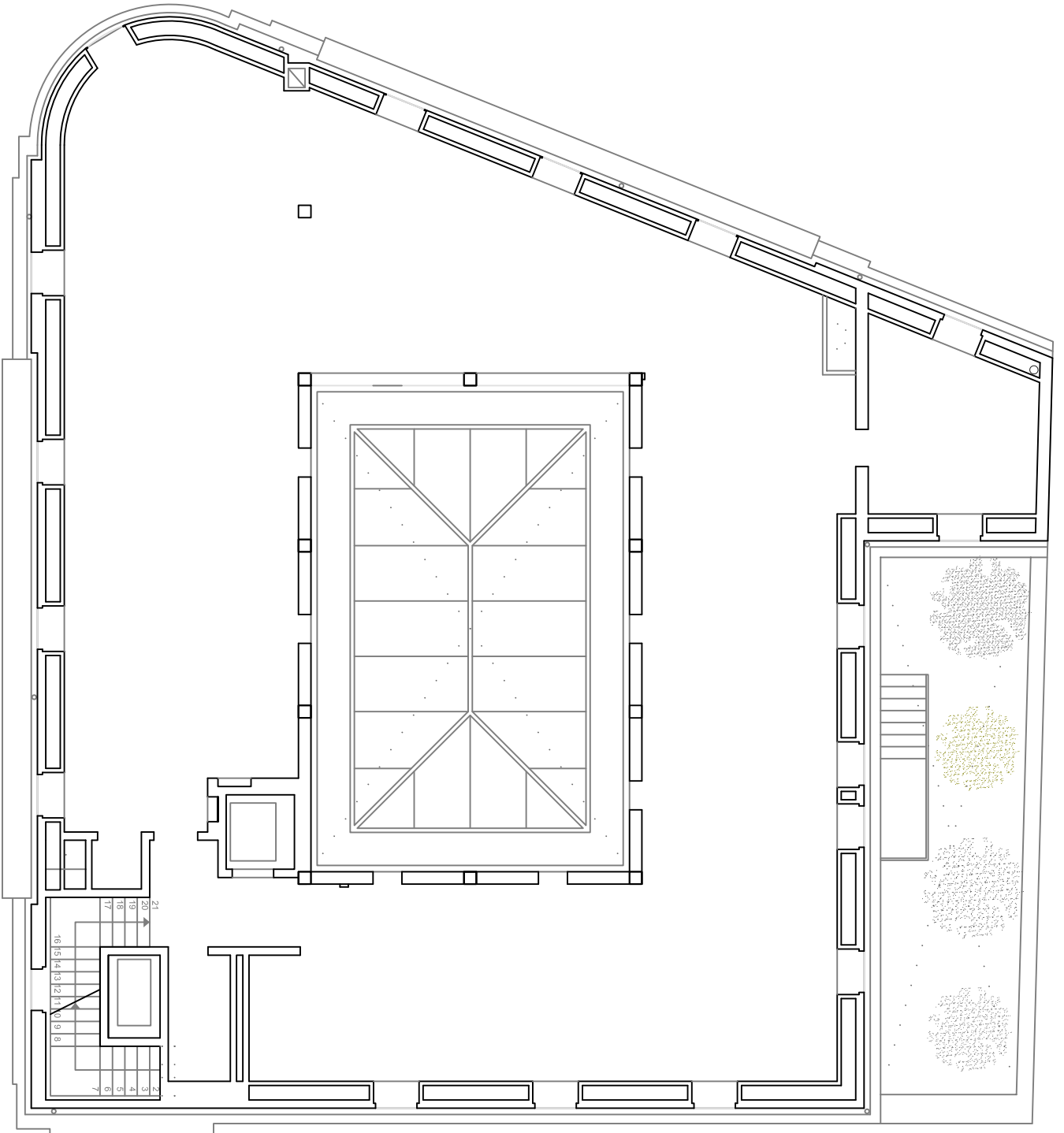




Total sup. construida PLANTA TERCERA

449,20 m²

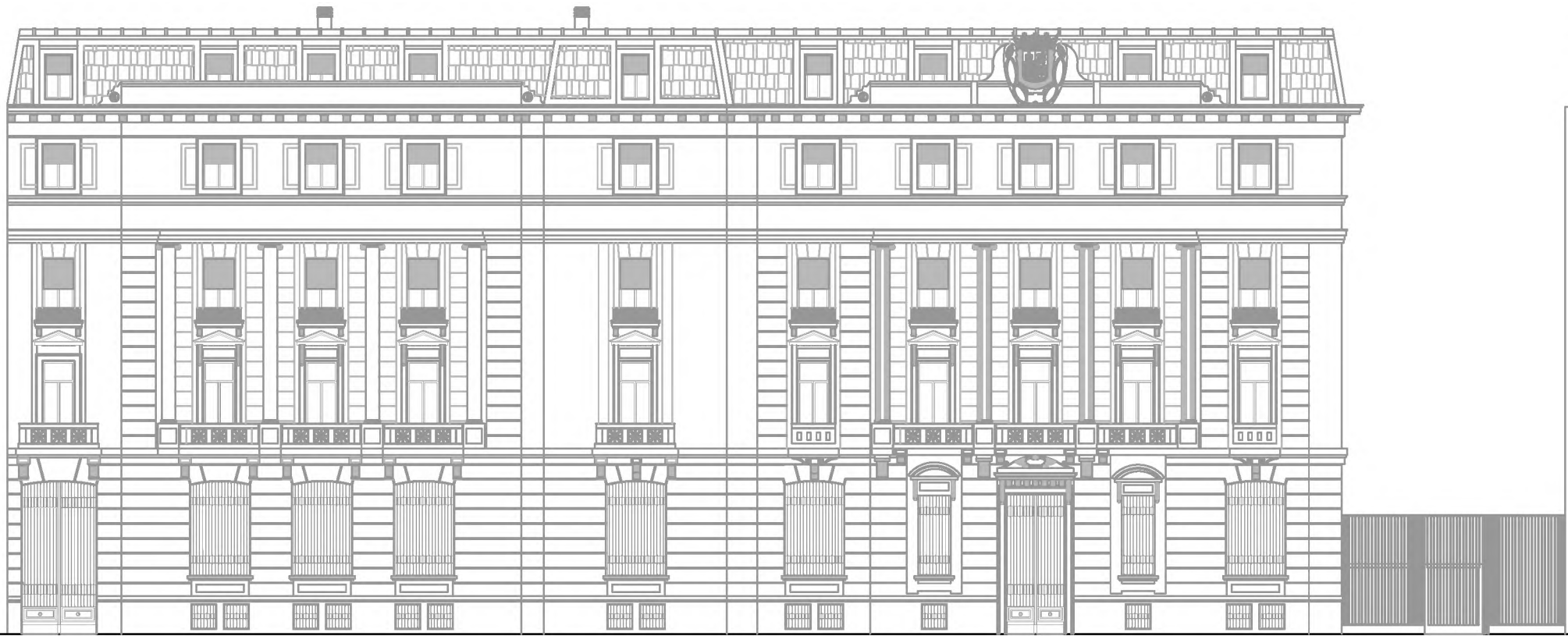




Total sup. construida PLANTA CUARTA

407,20 m²





ALZADO CALLE LATERAL. ALZADO CHAFLAN. ALZADO CALLE PRINCIPAL.

